

ATRIUM

6mm Luxury Vinyl Tile (LVT)

PRODUCT DESCRIPTION

Atrium luxury vinyl flooring combines refined design with practical performance for demanding commercial and studio environments. Available in plank and tile formats, the collection features stylish wood and stone effect finishes that bring a high-end aesthetic to any interior. An integrated underlay helps smooth minor subfloor unevenness while enhancing comfort underfoot, and the durable 0.55mm wear layer makes Atrium well suited to high-traffic spaces.

TECHNICAL SPECIFICATIONS

Property	Value	Test Standard
Material Composition	Luxury vinyl (LVT) with integrated underlay	—
Plank Dimensions	1,219 × 177.8 mm	—
Tile Dimensions	914 × 457.2 mm	—
Thickness	6mm (with underlay)	—
Wear Layer	0.55mm	EN ISO 24340
EU Fire Classification	Bf1-s1	EN 13501-1
Chemical Resistance	OK	EN ISO 26987
Thermal Resistance	0.030 m ² ·K/W	ISO 8302
Residual Indentation	<0.1 mm	EN ISO 24343-1
Dimensional Stability	<0.15%	EN ISO 23999
Slip Resistance	R10	DIN 51130
Acoustic Insulation	19 dB reduction	EN ISO 10140-3
Lock Strength	>1.5 kN/m (Pass)	EN ISO 10582
Installation Method	5G locking system	—
Warranty	10 years	—

ATRIUM

6mm Luxury Vinyl Tile (LVT)

AVAILABLE FINISHES & DIMENSIONS

Plank options (wood effect):

Cairo, Faro, Monsanto, Orlando, Oslo, Palermo, Porto, Sorrento

Tile options (stone effect):

Bali, Delhi, Fuji, Rimini

Plank: 1,219 × 177.8 mm · Tile: 914 × 457.2 mm · 6mm total thickness (integrated underlay).

RECOMMENDED APPLICATIONS

Reception and circulation areas · Hospitality zones · Light exercise areas · Yoga and Pilates studios · Wellness spaces.

NBS SPECIFICATION CLAUSE

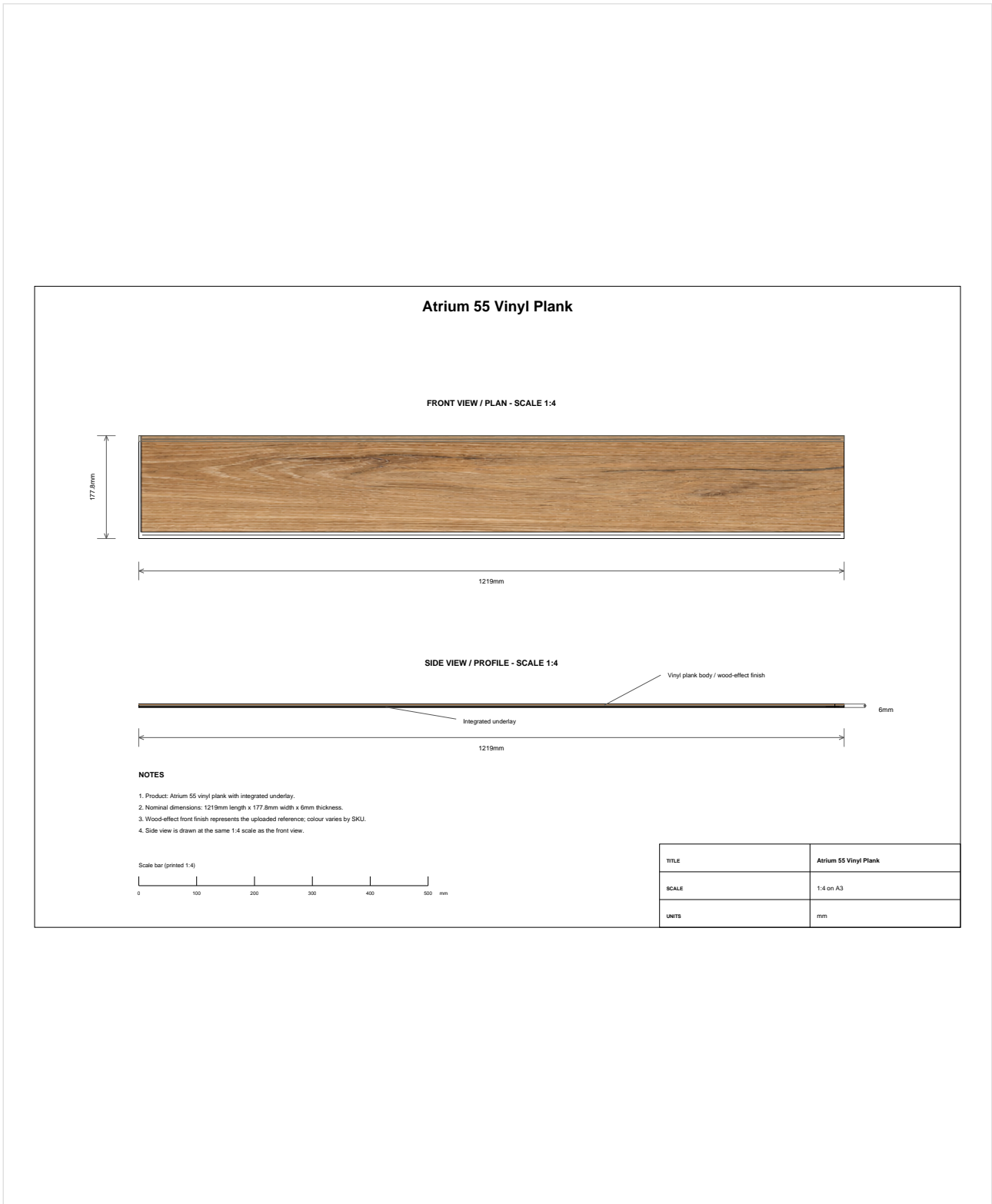
Clause Reference: M50 / 130 — Luxury Vinyl Tile (LVT)

Supply and install Superstrata Atrium luxury vinyl flooring to the areas indicated on drawings. Plank format: 1,219 × 177.8 mm; tile format: 914 × 457.2 mm; 6mm total thickness with integrated underlay and 0.55mm wear layer (EN ISO 24340). Fire classification: Bf1-s1 (EN 13501-1). Impact sound reduction: 19 dB (EN ISO 10140-3). Slip resistance: R10 (DIN 51130). Lock strength: >1.5 kN/m (Pass) (EN ISO 10582). Install using manufacturer's 5G locking system without adhesive to the wear surface. Provide 10-year manufacturer's warranty on completion. Manufacturer: Superstrata Performance Flooring, www.superstrata.fit

ATRIUM

6mm Luxury Vinyl Tile (LVT)

TECHNICAL DRAWING — Wood Effect Plank



ATRIUM

6mm Luxury Vinyl Tile (LVT)

TECHNICAL DRAWING — Stone Effect Tile

